

***Biology 223***

***Human Anatomy and Physiology***

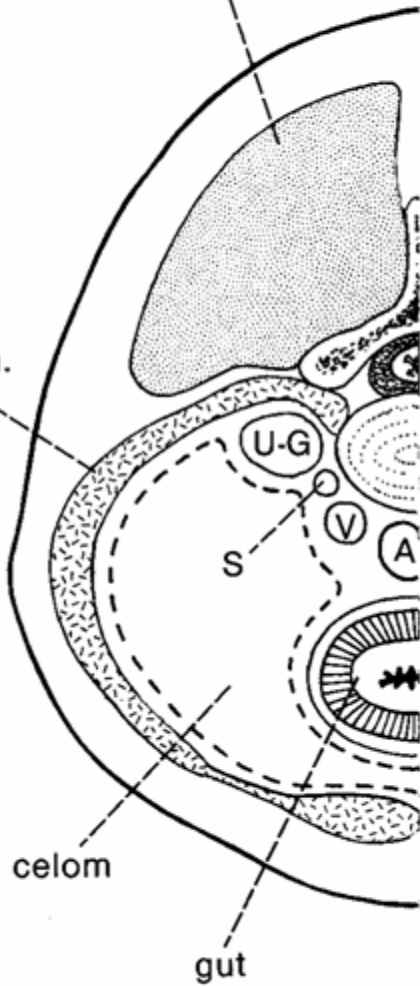
***Week 10; Lecture 1; Monday***

***Dr. Stuart S. Sumida***

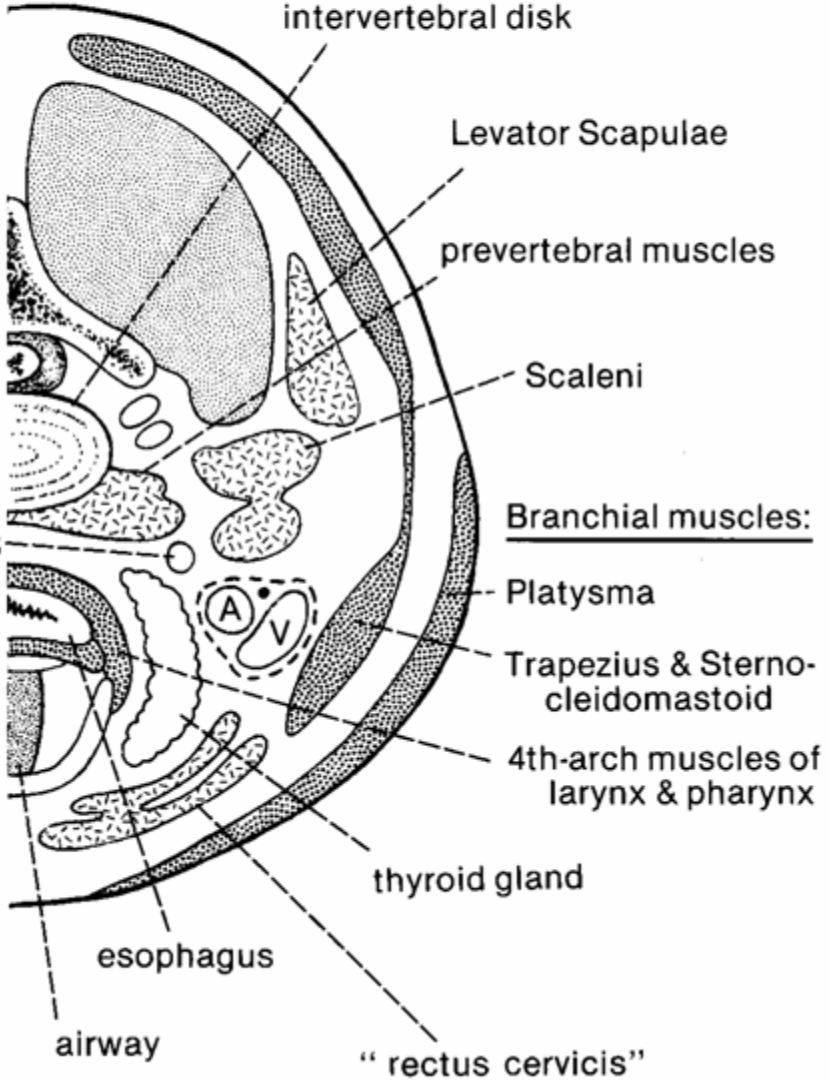
**From the Head to the Neck  
(or was it from the body to  
the neck?)**

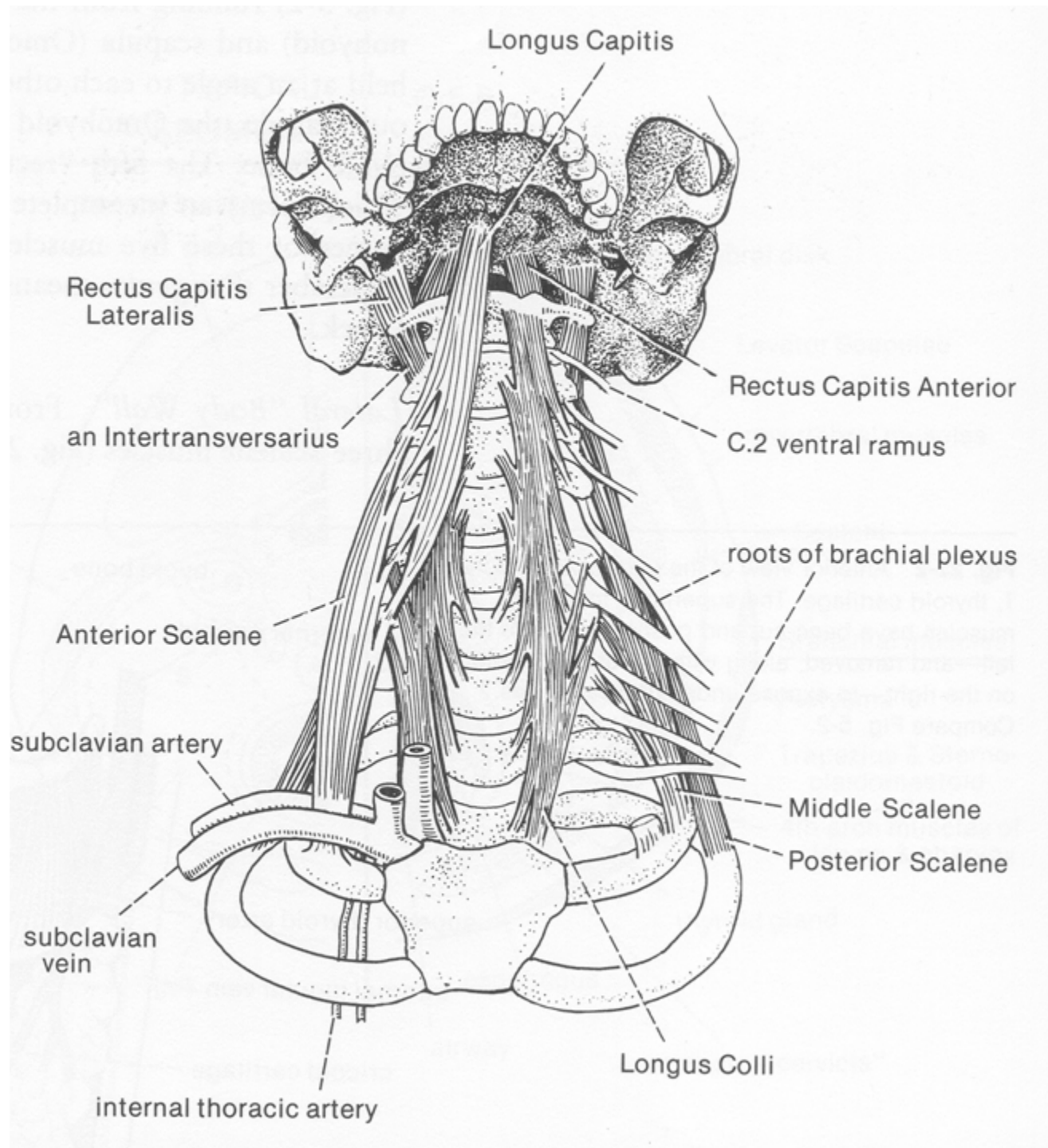
# The Neck

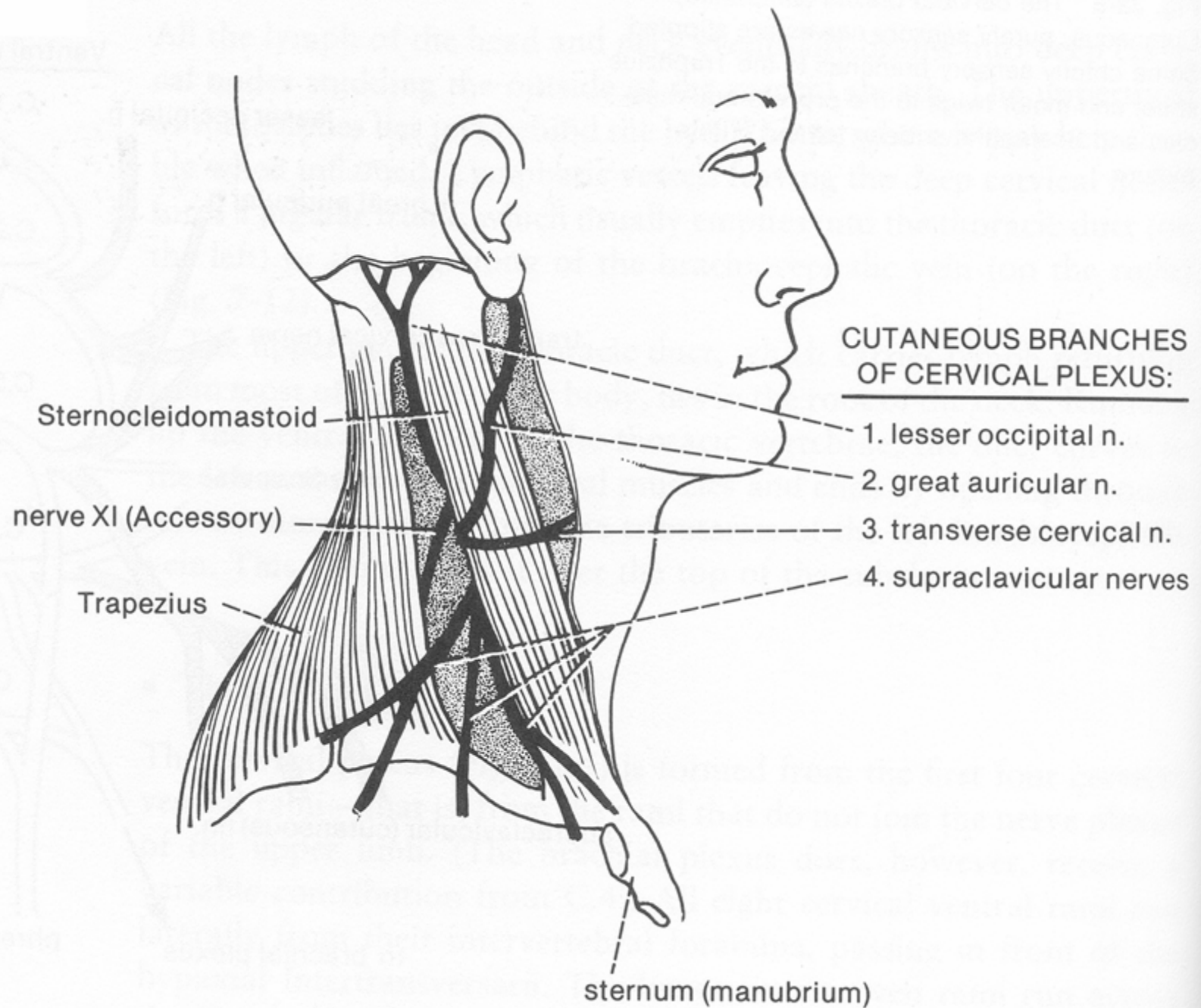
epaxial muscles

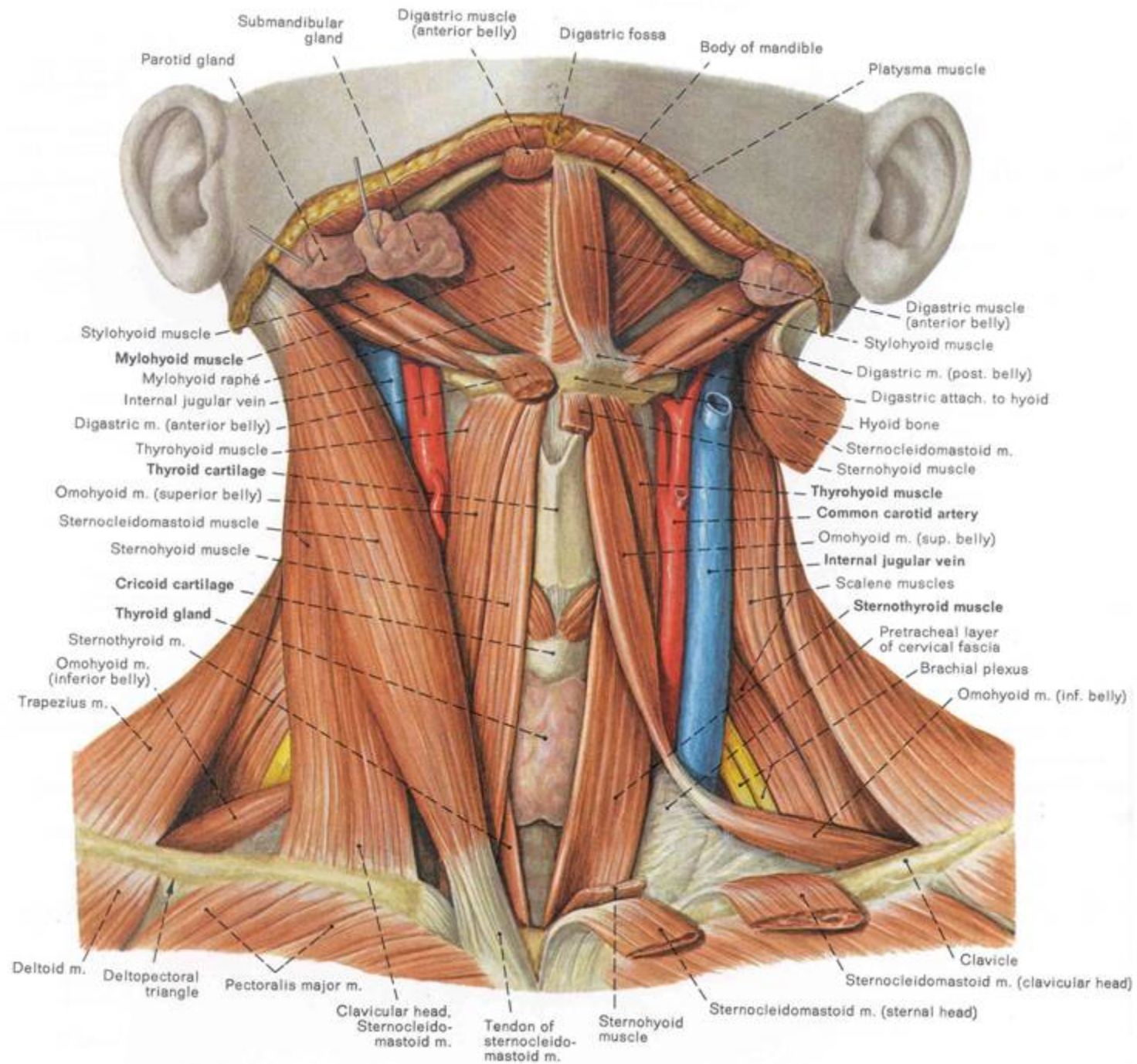


\_\_\_\_\_

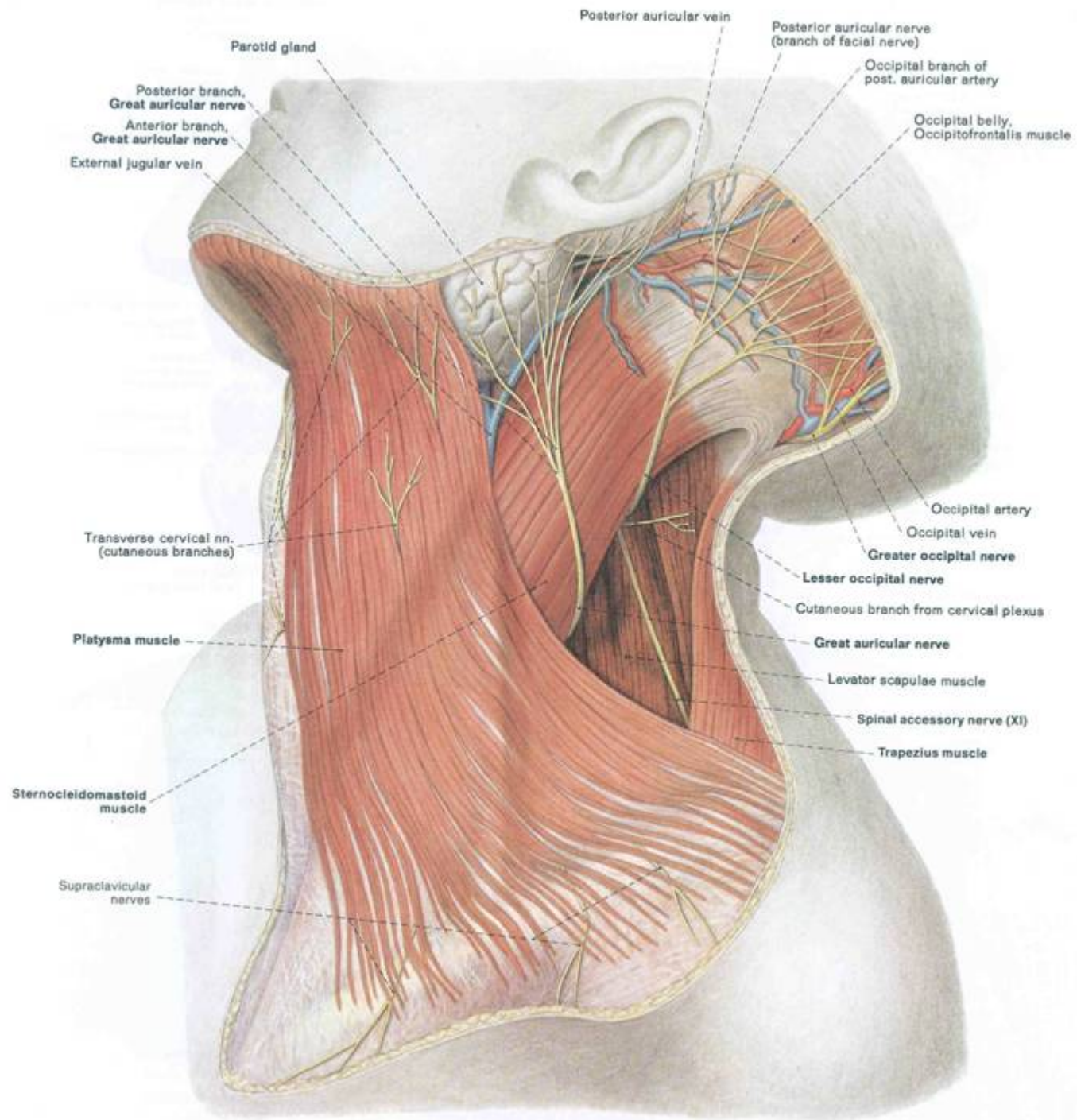


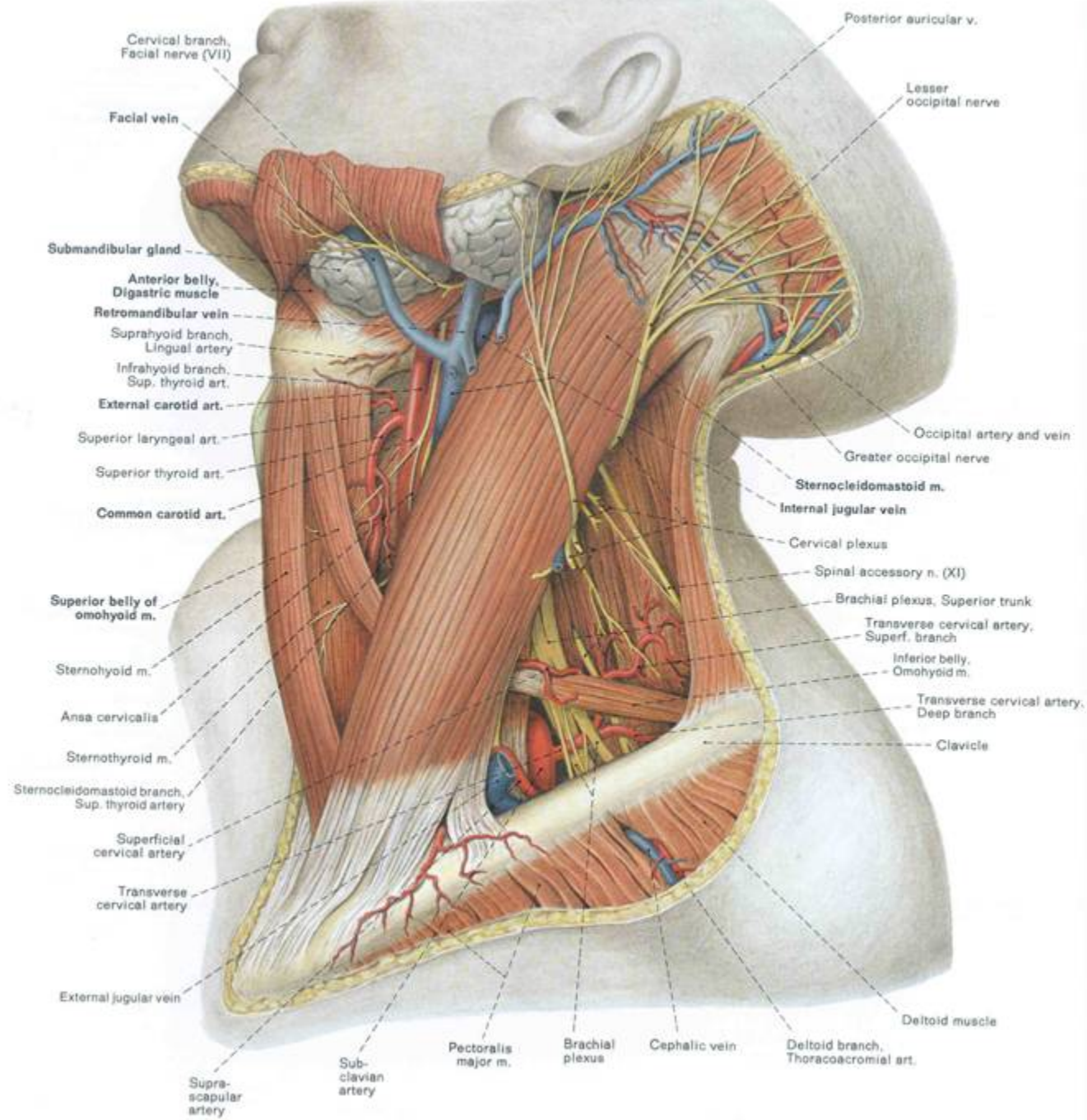




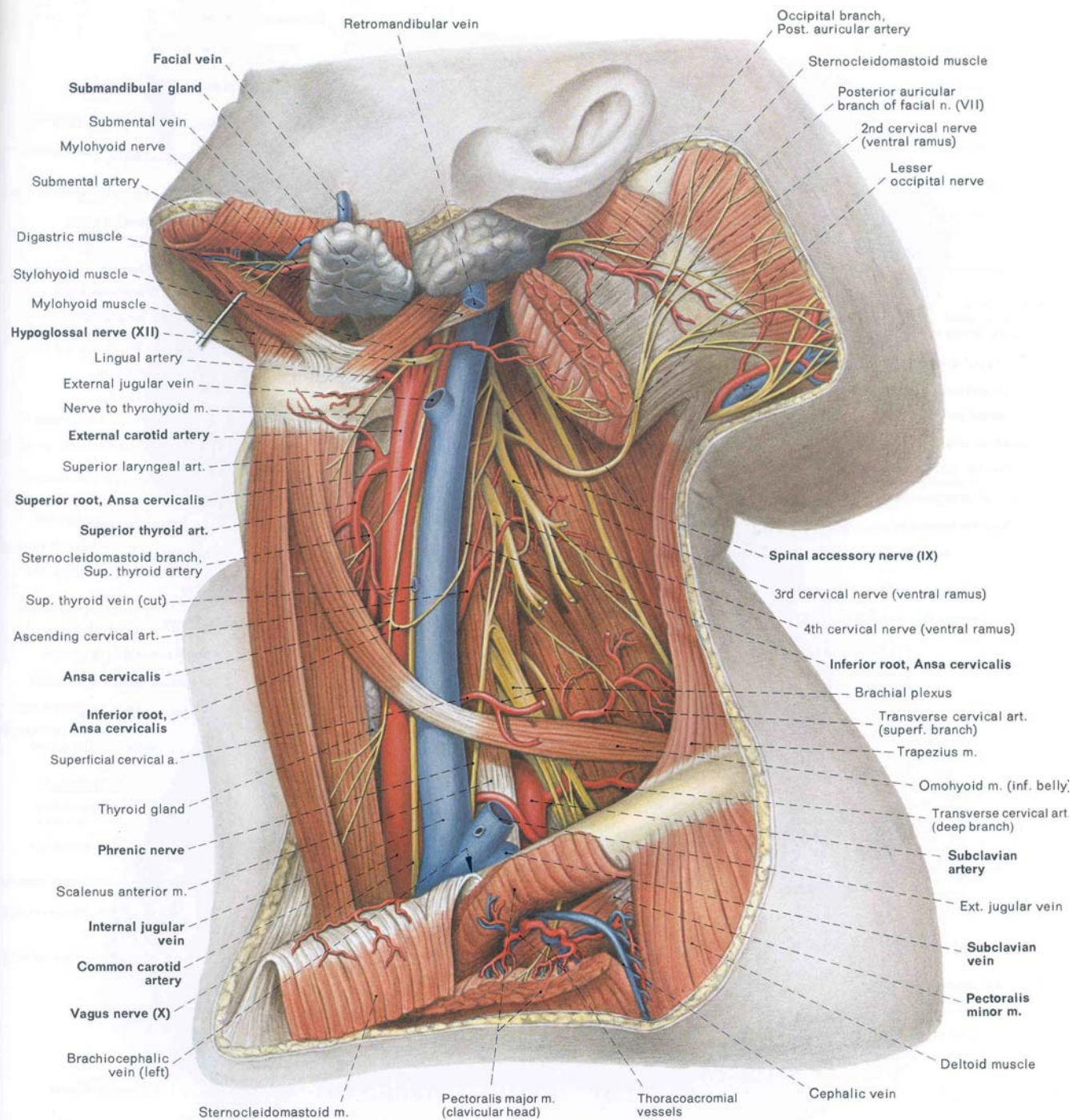




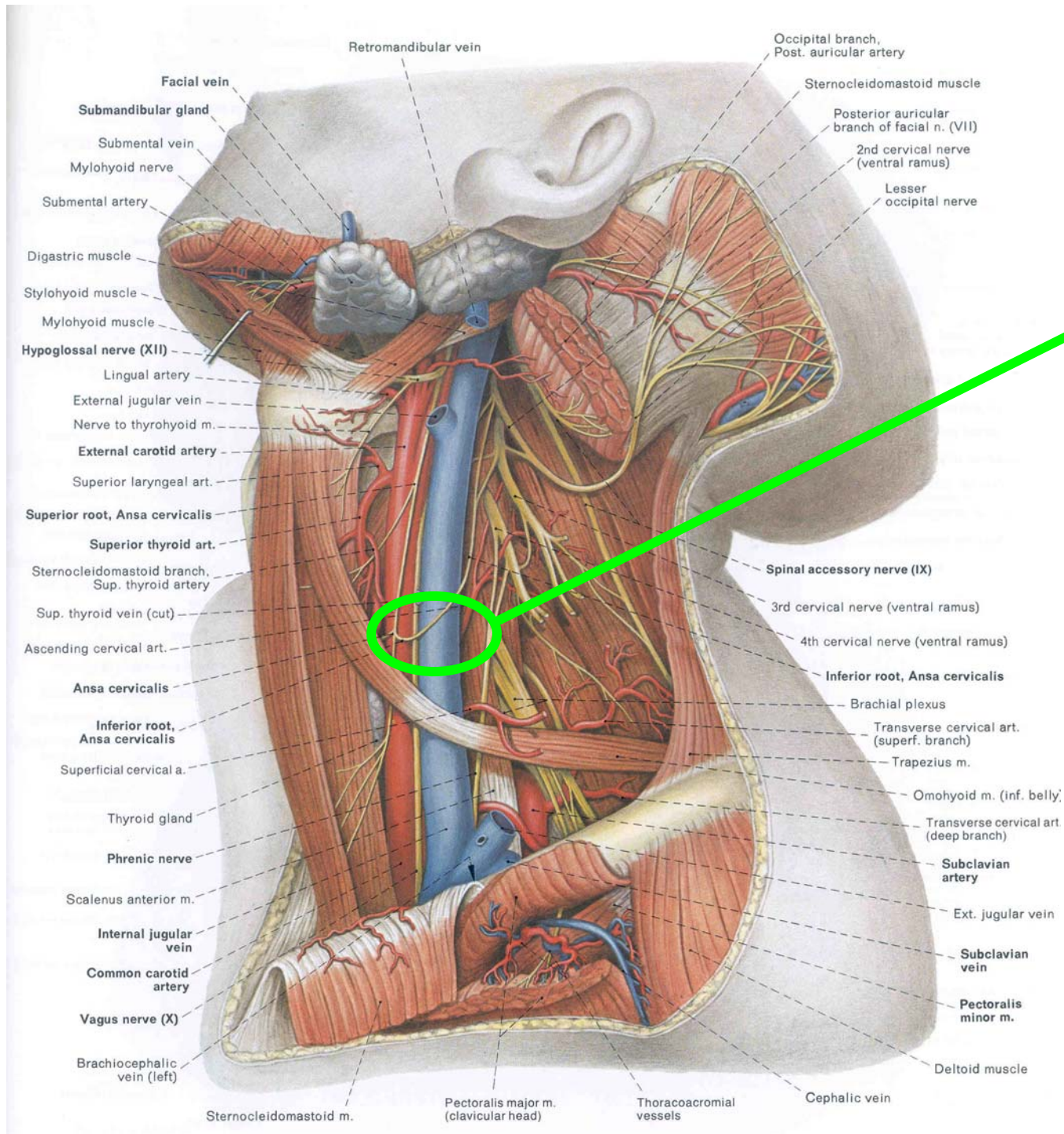












## Carotid Sheath:

- Carotid Artery
- Jugular Vein
- Vagus Nerve

Do you remember what foramina these pass through?!

