

Biology 323

Human Anatomy for Biology Majors

Week 0; Lecture 1

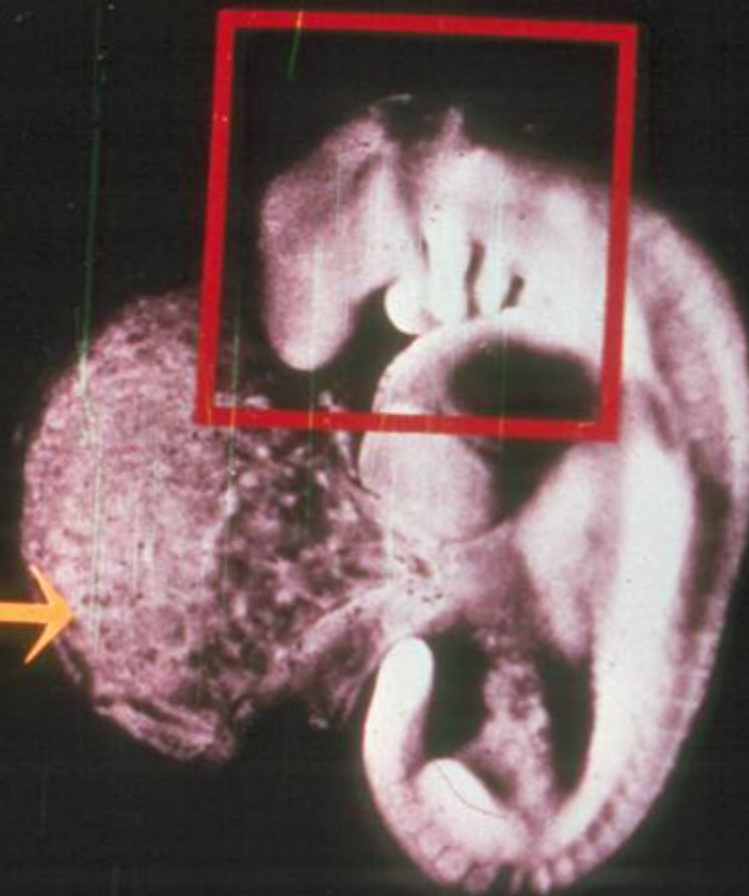
Dr. Stuart S. Sumida

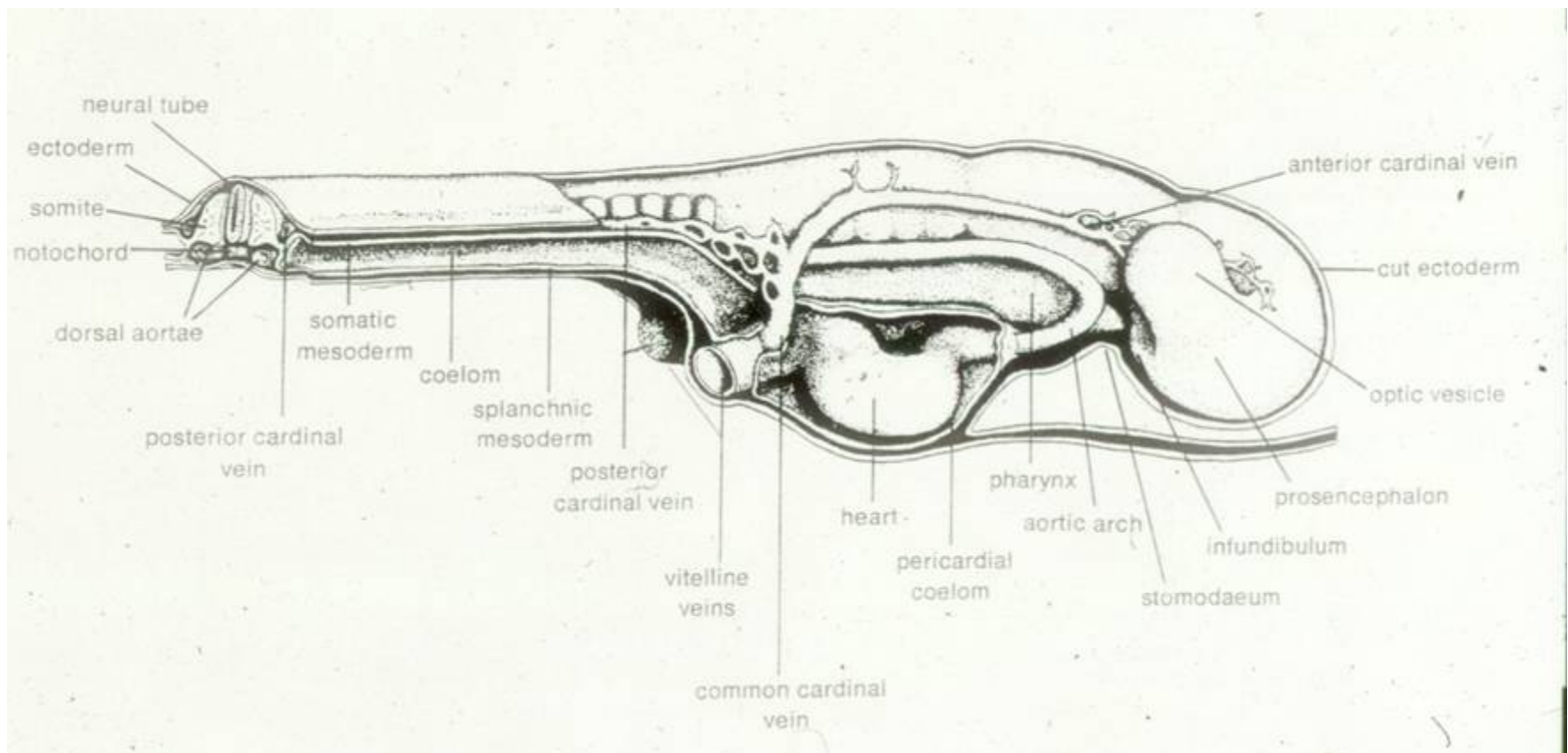
Humans as Vertebrates

Early Development of Humans

28-DAY-OLD EMBRYO. CHORION AND AMNION REMOVED.
SIDE OF RED SQUARE = 1/16 INCH.

YOLK SAC

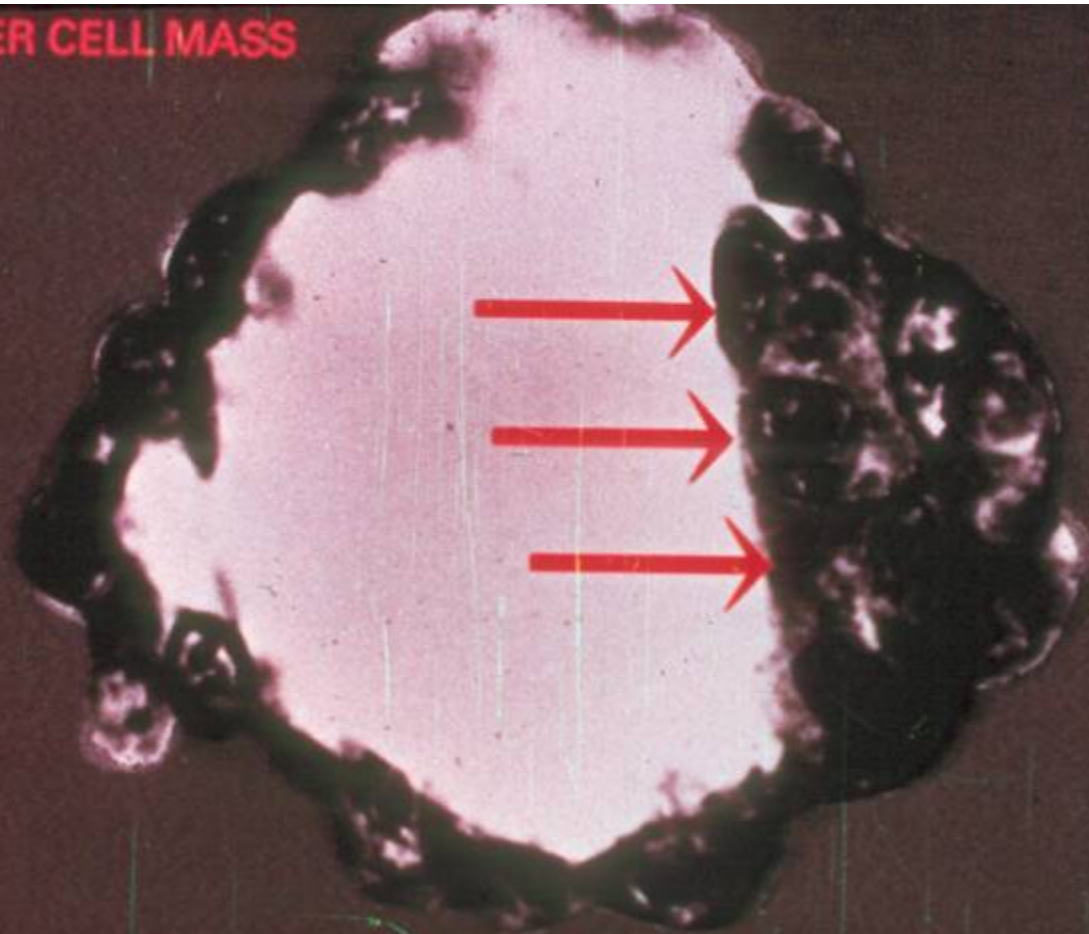




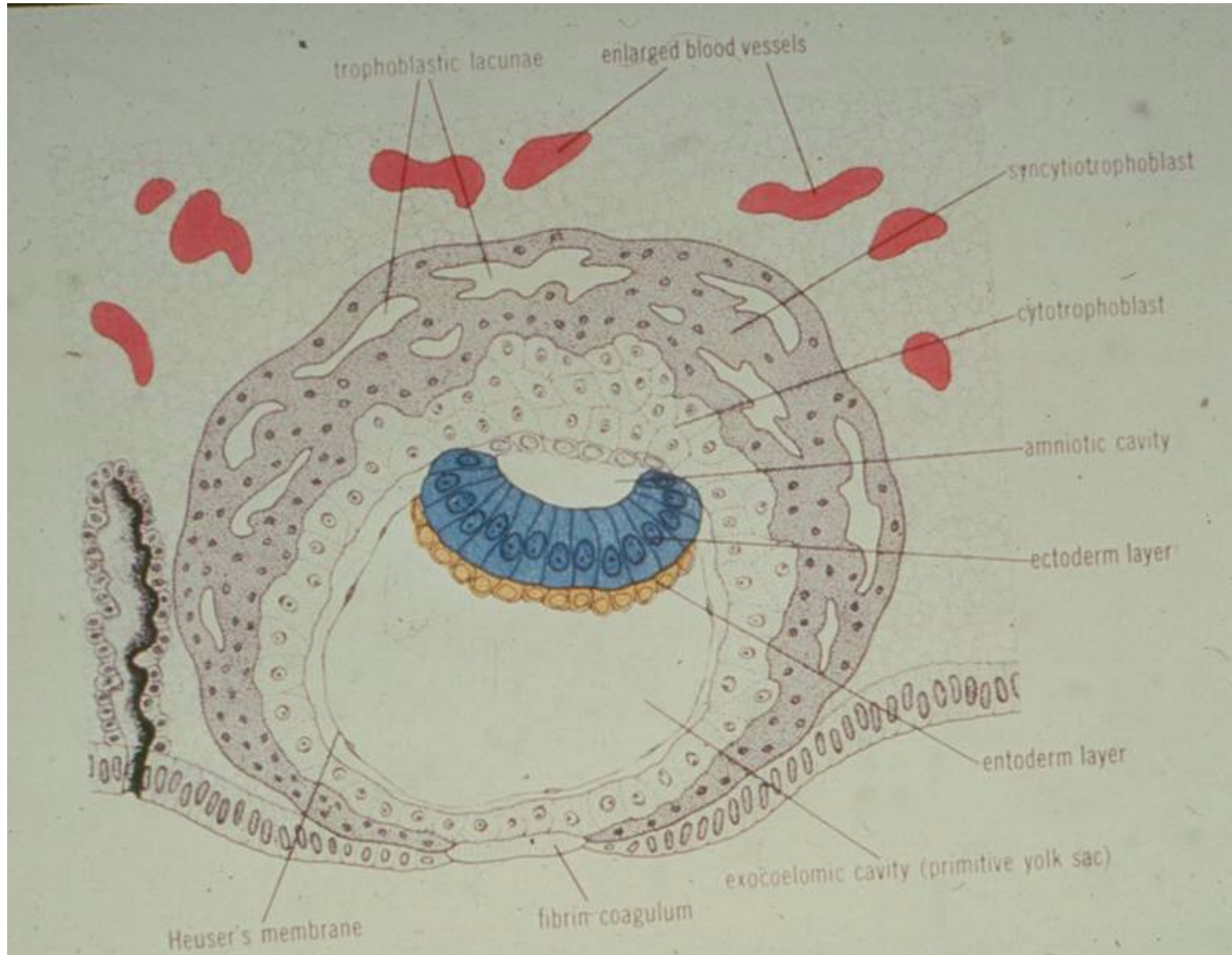


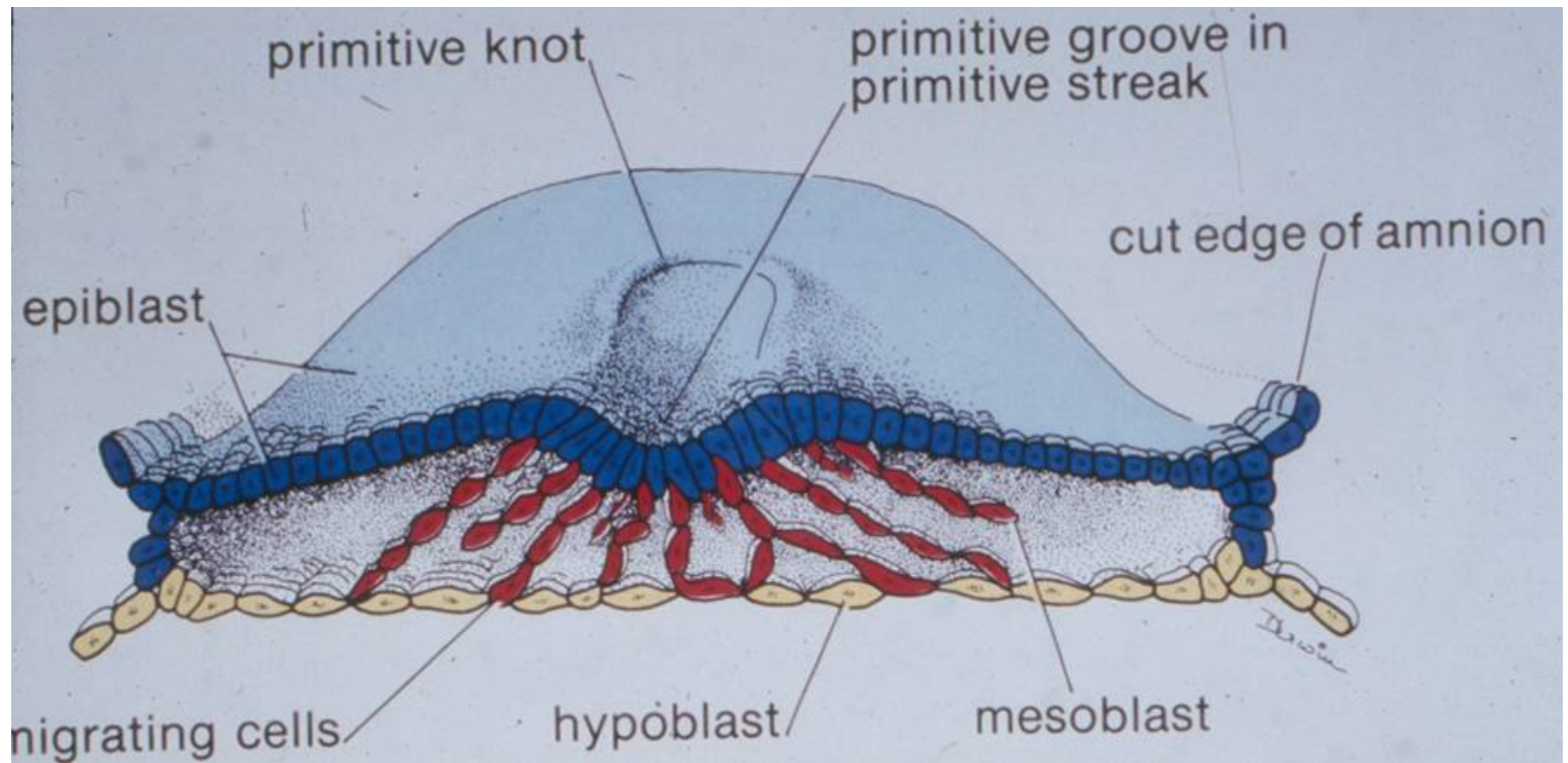
Morula

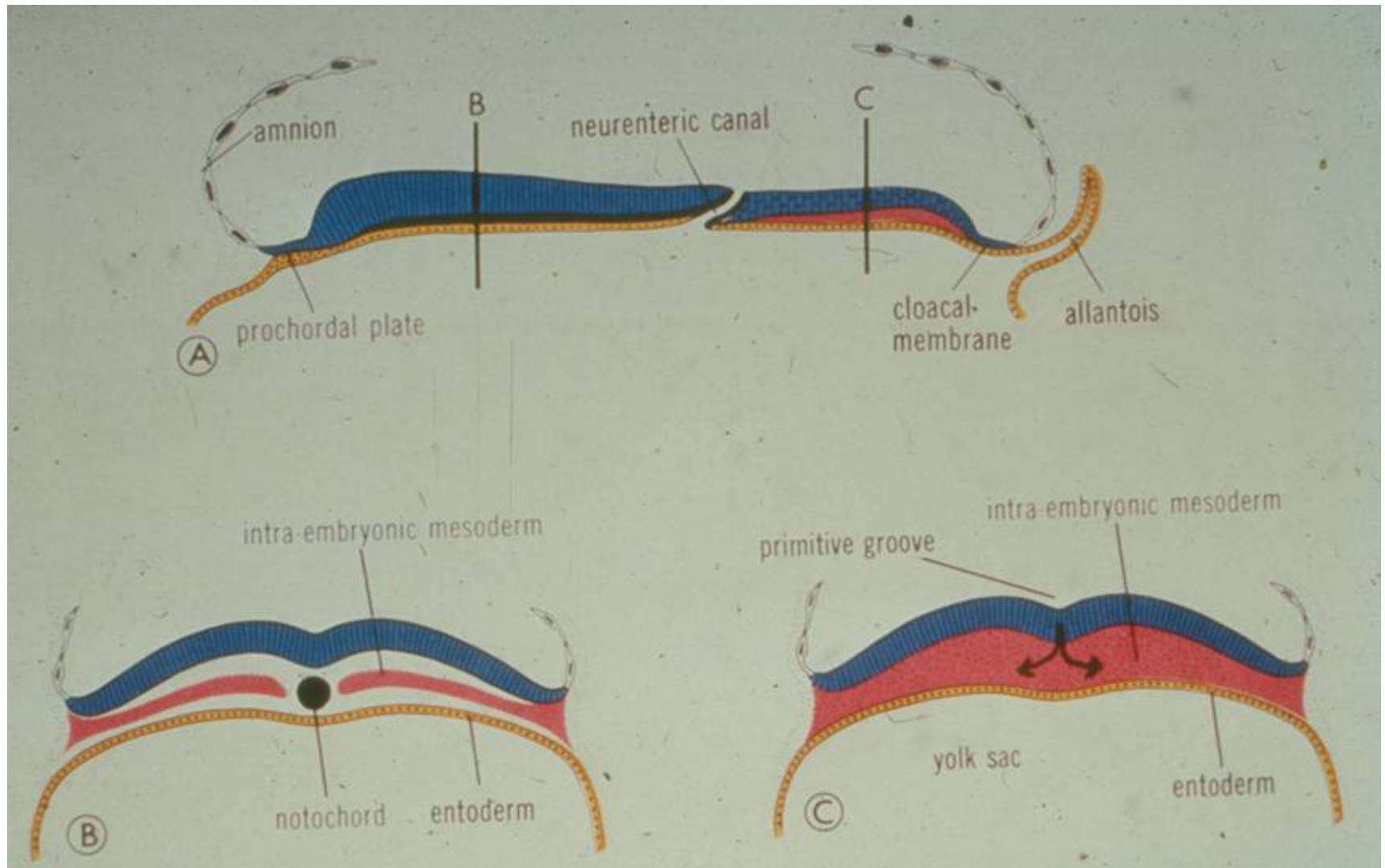
INNER CELL MASS

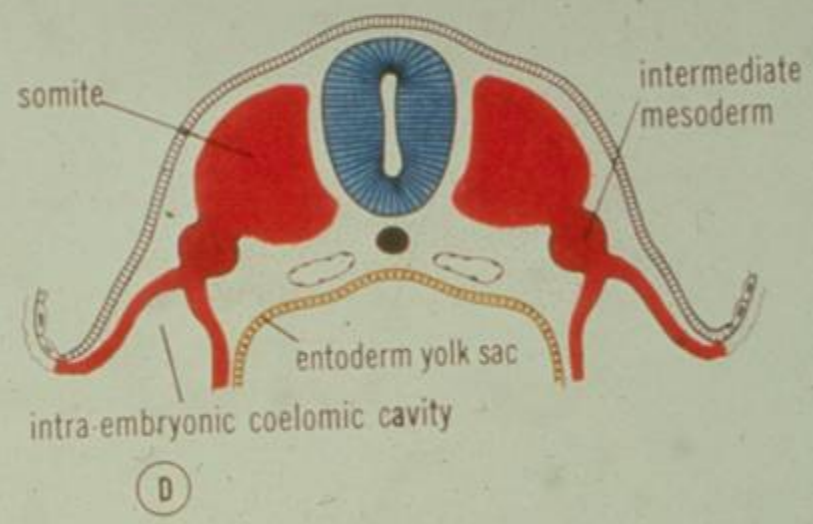
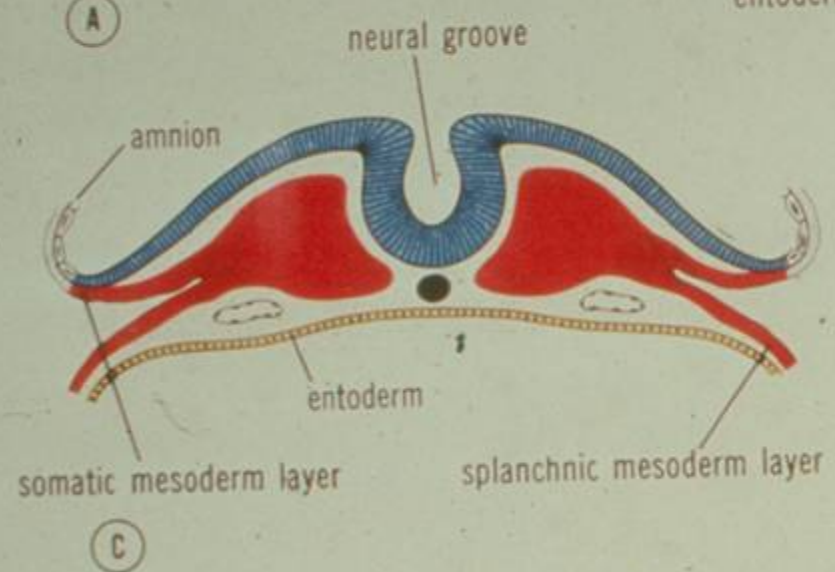
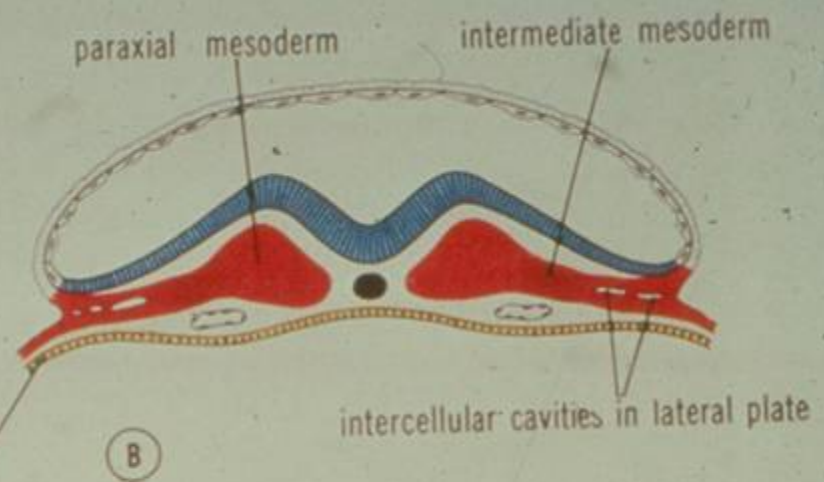
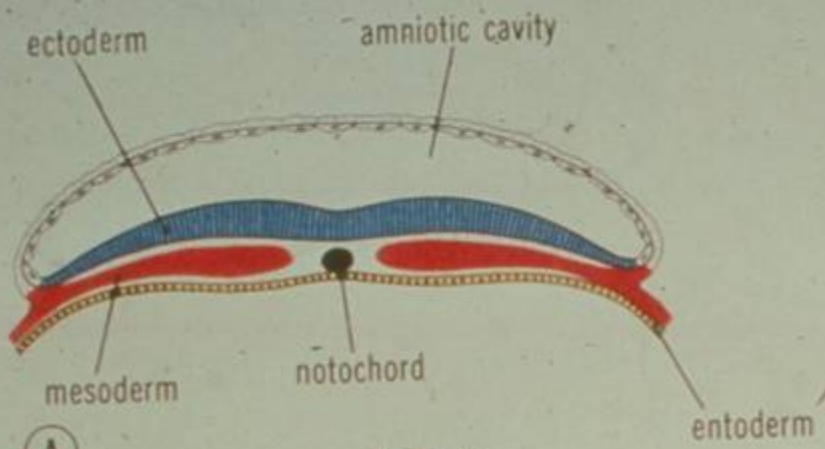


**THE GROUP OF LARGE CELLS CALLED THE "INNER
CELL MASS" WILL FORM THE EMBRYO.**









Neural Crest Development

